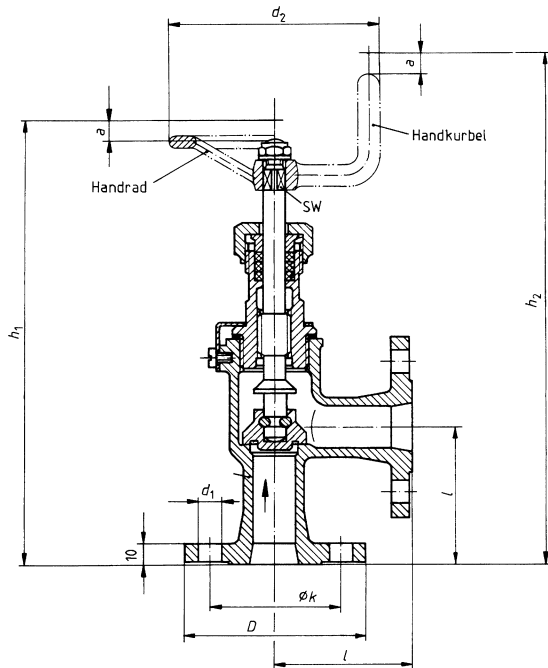


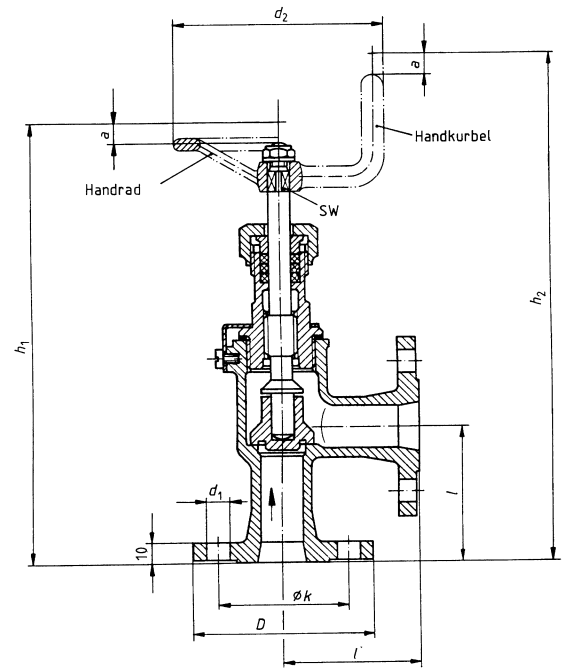
Range of application

This standard applies to flanged valves which are used on ships in the Federal German Navy in piping for fresh water, seawater, fuel and lubricating oil.

Applications with working temperatures up to 225°C are permissible. Applications with nominal pressure are permissible at working temperatures up to 120°C.



Type B
Shut-off angle valve, metal sealing



Type D
Check angle valve, metal sealing

Designation of a shut-off angle valve type B of nominal size 20 :

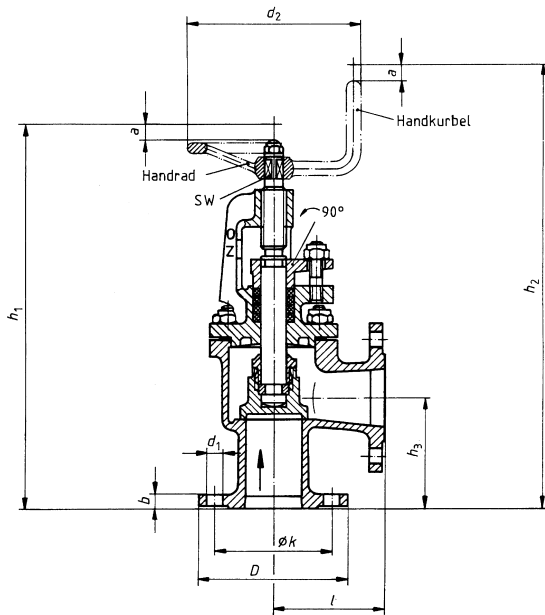
Valve VG 85034 - B 20

Nom. size DN	l ± 1	Total height for open valve		Lift a ≈	Dimensions for pipe connection flange					AF	Handwheel / -crank ¹⁾ d ₂	Mass (Weight) without Handwheel / -crank kg ≈
		h ₁ ≈	h ₂ ≈		D	k	Screw holes					
							Qty.	d ₁	for screws			
20	65	211	243	10	86	62	4	11	M10	9	100	2.0
25	70	214	246	10	92	68	4			9	100	2.3
32	75	240	282	13	100	76	6			11	125	2.8

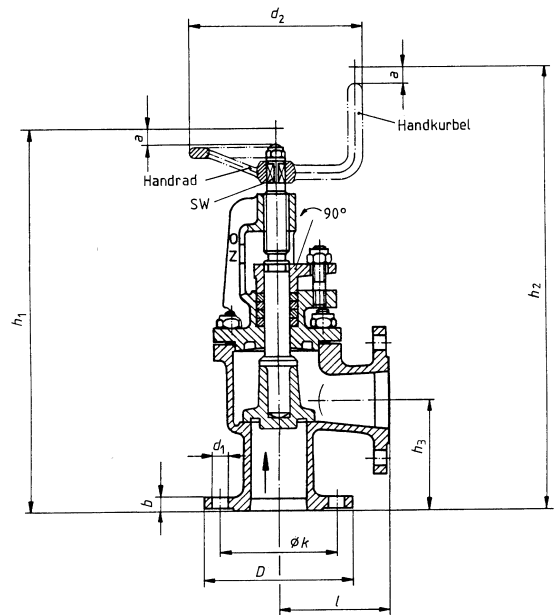
¹⁾ Handwheel or crank (see VG 85081) are not included and must be ordered separately.

Range of application

This standard applies to flanged valves which are used on ships in the Federal German Navy in piping for fresh water, seawater, fuel and lubricating oil. Applications with working temperatures up to 225°C are permissible. Applications with nominal pressure are permissible at working temperatures up to 120°C.



Type B
Shut-off angle valve, metal sealing



Type D
Check angle valve, metal sealing

Designation of a shut-off angle valve type B of nominal size 40 :

Valve VG 85034 - B 40

Nom. size DN	l max. tol.	Total height for open valve		h ₃ ± 1	Lift a ≈	Dimensions for pipe connection flange					AF	Hand-wheel / -crank ¹⁾ d ₂	Mass (Weight) without Handwheel / -crank kg ≈	
		h ₁ ≈	h ₂ ≈			D	b	k	Screw holes					
									Qty.	d ₁				for screws
40	80	279	322	80	12	108	10	84	6	11	M10	11	125	5.2
50	85	294	337	85	16	120	10	96	6			11	125	5.9
70	110	360	404	95	25	140	12	116	8			14	175	8.6
80	115	372	416	100	28	150	12	126	8			14	175	10.7
100	130	413	457	115	35	172	12	148	10			14	175	14
125	145	470	518	130	44	200	14	176	10			17	200	18.8
150	160	503	551	140	53	226	14	202	12			17	200	22.6
175	180	578	627	160	64	264	14	240	14			22	250	31.7
200	200	615	664	175	73	288	14	264	16			22	250	36.9

¹⁾ Handwheel or crank (see VG 85081) are not included and must be ordered separately.