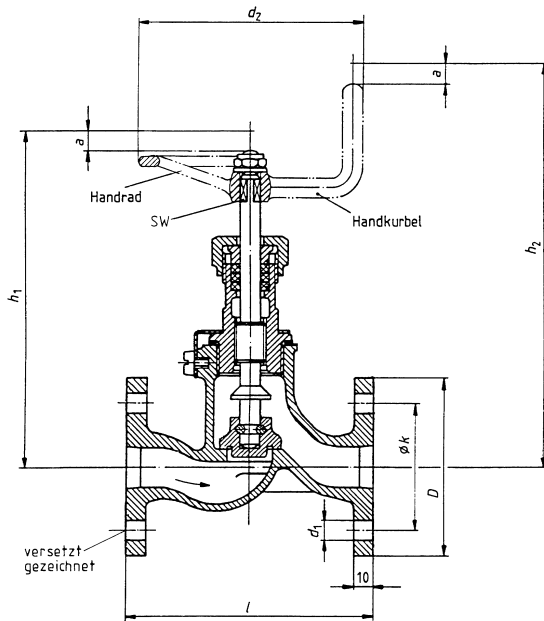
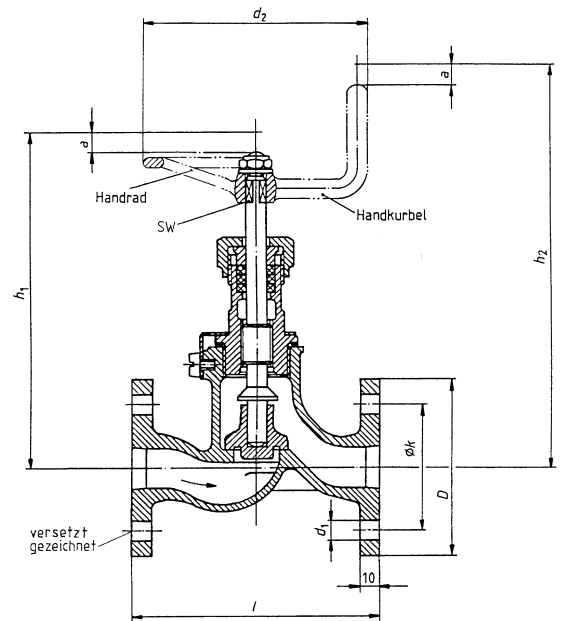


Range of application

This standard applies to flanged valves which are used on ships in the Federal German Navy in piping for fresh water, seawater, fuel and lubricating oil. Applications with working temperatures up to 225°C are permissible. Applications with nominal pressure are permissible at working temperatures up to 120°C.



Type B
 Shut-off through-way valve, metal sealing



Type D
 Check through-way valve, metal sealing

Designation of a shut-off through-way valve type B of nominal size 20 :

Valve VG 85033 - B 20

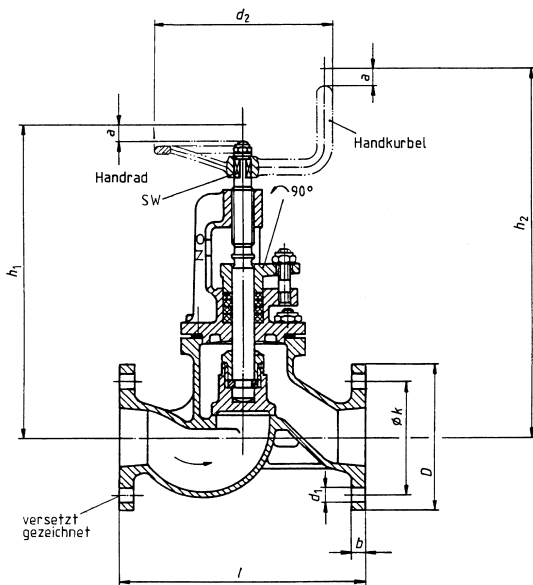
Nom. size DN	l ± 1	Total height for open valve		Lift a ≈	Dimensions for pipe connection flange					AF	Handwheel / -crank ¹⁾ d ₂	Mass (Weight) without Handwheel / -crank kg ≈
		h ₁ ≈	h ₂ ≈		D	k	Screw holes					
							Qty.	d ₁	for screws			
20	120	163	195	10	86	62	4	11	M10	9	100	2.1
25	130	163	195	10	92	68	4			9	100	2.3
32	140	190	232	13	100	76	6			11	125	3.1

¹⁾ Handwheel or crank (see VG 85081) are not included and must be ordered separately.

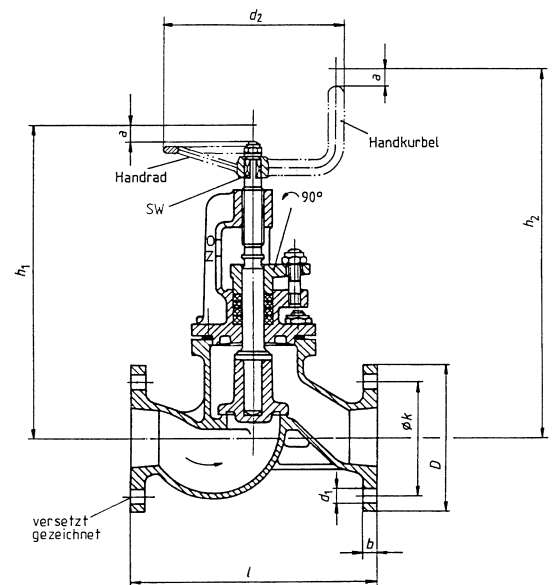
Range of application

This standard applies to flanged valves which are used on ships in the Federal German Navy in piping for fresh water, seawater, fuel and lubricating oil.

Applications with working temperatures up to 225°C are permissible. Applications with nominal pressure are permissible at working temperatures up to 120°C.



Type B
Shut-off through-way valve, metal sealing



Type D
Check and through-way valve, metal sealing

Designation of a shut-off through-way valve type B of nominal size 40 :

Valve VG 85033 - B 40

Nom. size DN	l		Total height for open valve		Lift a	Dimensions for pipe connection flange					AF	Hand-wheel / -crank ¹⁾ d ₂	Mass (Weight) without Handwheel / -crank kg	For type		
						D	b	k	Screw holes					B	D	
									Qty.	d ₁						for screws
40	180	± 1	231	274	12	108	10	84	6	11	M10	11	125	5.6	X	X
50	210	± 1	246	289	16	120	10	96	6			11	125	6.6	X	X
70	260	± 1.3	318	362	25	140	12	116	8			14	175	10.1	X	X
80	280	± 1.4	330	374	28	150	12	126	8			14	175	12.5	X	X
100	330	± 1.7	365	409	35	172	12	148	10			14	175	16.9	X	X
125	390	± 2	418	466	44	200	14	176	10			17	200	23.5	X	X
150	450	± 2.3	448	496	53	226	14	202	12			17	200	30.1	X	X
175	530	± 2.7	516	565	64	264	14	240	14			22	250	43.1	X	X
200	580	± 2.9	546	595	73	288	14	264	16			22	250	50	X	X

¹⁾ Handwheel or -crank (see VG 85081) are not included and must be ordered separately.